



V O S O N I C

(VP8860)

V1.0

Dear Customer,


Thank you for purchasing Vosonic VP8860.

Before using Vosonic VP8860, you will have to

1 Charge the battery :

Battery Level

Low Battery :  (Red)

Charging : 

Full Battery :  (Green)

- 2. Keep VP8860 plugged into the AC adapter/charge while connected to your computer.**
- 4. Make sure the HDD has already partition or format as FAT system.**
- 5. Check www.vosonic.com to download the update firmware that we offer new functions and improved features.**

Wishing you all the best

The Vosonic Team

FCC Certifications

This equipment has been tested and found to comply with the limits for a Class B digital device, pursuant to Part 15 of the FCC Rules. These limits are designed to provide reasonable protection against harmful interference in a residential installation.

This equipment generates, uses and can radiate radio frequency energy and, if not installed and used in accordance with the instructions, may cause harmful interference to radio communications.

However, there is no guarantee that interference will not occur in a particular installation. If this equipment does cause harmful interference to radio or television reception, which can be determined by turning the equipment off and on, the user is encouraged to try to correct the interference by one or more of the following measures:

- Reorient or relocate the receiving antenna.
- Increase the separation between the equipment and receiver.
- Connect the equipment into an outlet on a circuit different from that to which the receiver is connected.
- Consult the dealer or an experienced technician for help.

CAUTION

Under no circumstances should you try to repair the system yourself, as this will invalidate the warranty. Do not open the system as there is a risk of electronic shock.

IMPORTANT WARRANTY INFORMATION

- To reduce the risk of fire or shock hazard, do not expose this equipment to rain ,any liquid or moisture.
- Vosonic shall have no obligation to repair ,replace or refund until the customer returns the defective product to Vosonic.
- The repairs and replacement service will not apply to PRODUCT units that were misused, repaired without authorization or by other reasons beyond the range of intended use.
- Any replacement product may be either new or like –new, provided that it has functionality at least equal to that of the product being replaced.
- Vosonic is not responsible for any data stored on returned products, please backup any data prior to shipping the unit.
- The limited warranty for accessories (included battery) is only valid for **6** months from the date of purchasing..
- All OUT OF WARRANTY repairs maybe subject to a normal repair fee. Please contact your dealer or Vosonic for current charges.

Package Checklist

- Main unit
- Earphone
- A/V cable with 3RCA plug for AV input
- Mini 5 Pins USB Cable
- Carrying Case
- English user's guide
- Power Adapter (100-240V auto switched)

Specifications

Specification

Video playback

Motion-JPEG

Resolution : up to 720x480@30fps

Audio : PCM

File format : MOV/AVI

MPEG-1

Resolution : up to 720x480@30fps

Audio : MPEG1

File format : .MPG/.DAT

MPEG-2

Resolution : up to 720x480@30fps

Audio : MPEG1/AC3

File format : MPG/VOB/MOD

MPEG-4

Resolution : up to 720x480@30fps

Audio : AAC/MPEG

File format : MP4/MOV/AVI

XviD

Resolution : up to 720x480@30fps

Audio : AAC/MPEG1

File format : AVI

Note 1. The VP8860 may not read the videos created with codes other than above. If you have these other file types that you would like to view on your VP8860, you must use the video - editing software to re-encode them into the proper video codec with supported sound stream.

Audio playback

MP3

Sample rate : 48 KHz

Bit-rate : 384 kbps

File format : MP3

Remark : MPEG1-L1/2/3, MPEG2-L1/2

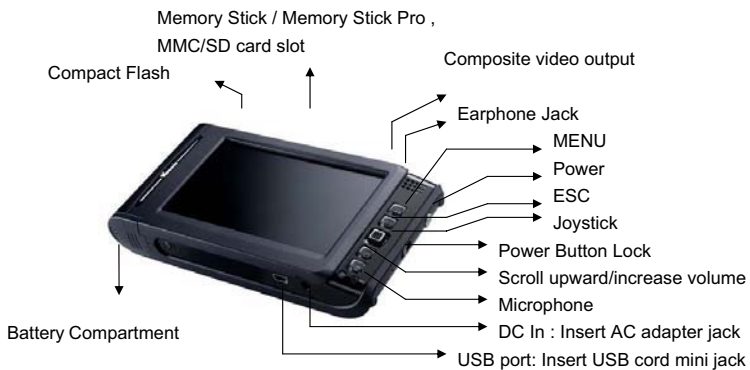
	<p>WAV Sample rate : 48 KHz Bit-rate : 1536 kbps File format : WAV Remark : linear, aLaw, uLaw, ADPCM, and GSM610</p> <p>WMA Sample rate : 44.1 KHz Bit-rate : 320 kbps File format : WAV Remark : WMA 7/8/9</p> <p>AAC Sample rate : 48 KHz Bit-rate : 320 kbps File format : M4A/AAC Remark : MPEG4 LC-AAC</p> <p>OGG Sample rate : 48 KHz Bit-rate : 320 kbps File format : OGG/FLC Remark : Ogg Vorbis</p>
Photo viewer	<p>JPEG: Baseline TIFF: 1 and 8 bits grayscale, 8 bits indexed-color, 8 and 16 bits true color BMP: Monochrome, 8 bits indexed-color, RGB, RLE8 GIF RAW: Check the supported models at www.vosonic.com</p> <p>Note: When use the zoom tool, if the enlargement is too big, it is possible that the pictures will look blurry.</p>
Support Memory Card Interfaces	<p>Compact Flash (CF) Memory Stick (MS) Secure Digital Card (SD) SD High Capacity (SDHC)</p>








Hard Disk Size	MultiMedia Card (MMC) Mini-SD (with adapter) RS-MMC (with adapter) MS Duo (with adapter), MS Pro Duo (with adapter).
	2.5" 9.5mm Hard Disk (SATA Interface) Note: VP8860 uses the FAT file system; the maximum size of a single file is usually limited to 2G.
Hard Disk Capacity	40G ~ 320G
Display	4.3" TFT LCD ,800x480 pixels
Interface	USB 2.0
Power supplier	5V/2.5A DC IN Li-ion 3.7V 2500 mAh battery (NP-100 compatible) Non-Stop Photo backup: Approx. 40 times for CF 1G card Non-Stop Music playback: Approx. 10 hours (LCD off mode) Non-Stop Video playback: Approx. 2.5~3 hours *The Li-ion rechargeable battery can be recharged approx. 500 times. *The times of backup will subject to the Hard Drive/ memory card/ Files type. *The battery life may vary with use.
Dimensions (WxLxH)	148x76x27mm (WxLxH)
Weight	328gr (included 2.5" HDD & battery pack)
System OS	Windows 2000 SP3 above Windows XP / Windows Vista Linux kernel 2.4 above Mac OS 10.0.1 above
Voice Recording	Voice recording from line-in or internal microphone *AAC format
FM Radio	87.5MHz ~ 108MHz

Direct Printing	PictBridge Compliant
Built –in speaker	8 Ohm up to 400mW
Operational Temperature	0° ~ 70°C
Video Recording	<p>Resolution: 320x240PSP 320x240Fine 640x480Normal 640x480Fine PAL : 720x576 Pixels NTSC :720x480 Pixels (Full-D1)</p> <p>Frame Rate: 20~30 fps TV Formats: NTSC & PAL Audio : AAC</p> <p>Bite Rate : Up to 4Mb/sec Format : MP4</p>

- Please visit our web site to download the most recent manual and software.
- Battery life may vary with use.
- The VP8860 may not read the videos created with codes other than above.If you have these other file types that you would like to view on your VP8860, you must use the video - editing software to re-encode them into the proper video codec with supported sound stream.

1. Overview of Panels & Keys :



keypad	Function Description
Joystick 	<i>Enter</i> : takes you to execute the current selection
	Rotate: This function will effect under Photo Playback Mode.
	Pause: This function will effect under Music & Video Playback Mode.
	◀ Direction icon: Use JoyStick button to move cursor on the screen.
	Fast Backward : This function will effect under Music & Video Playback Mode.
	▶ Direction icon: Use JoyStick button to move cursor on the screen.
	Fast Forward :This function will effect under Music & Video Playback Mode.
	MENU: Play modes & system setting selection
	Takes you go back to previous mode
	Allows you to zoom out the photo  This function will effect under Photo Playback Mode.
	Allows you to increase the volume
	Allows you to decrease the volume
	Allows you to zoom in the photo  This function will effect under Photo Playback Mode.

2. Using the VP8860

2-1. Starting up

1) Charge the batteries

- Before using for the first time, charge the batteries for a full 4 hours.

2) Power On /Off

- Press the Power button
- The green light will go on and the operating system will boot up.
- To shut off the unit, long press the power button for 2 seconds.

3) Driver installation

Windows XP HomeEdition and Professional Edition
Win2000 Professional SP 3 above

Windows Me and Windows XP HomeEdition and Professional Edition, Win2000 Professional Service Pack 3 above users do not need to install any drivers .Windows will automatically detect your device as following figure.

Hard Disk Drives



Devices with Removable Storage



* Right-click on 'My Computer' select 'Properties', and then look in the tab labeled 'General'. It should say "Service Pack 1" or higher.

Mac® OS X

Your OS X version must have Mass Storage device support.

The Vosonic will be automatically recognized as mass storage device (Hard Drive) and mounted on the desktop.

You can now use Vosonic like any other external hard drive.


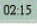


2-2 . USB CONNECTION :

When VP8860 begins connecting to the computer, the " **Connect**" message will appear in the middle of the screen. During file transfer in the PC mode

DO NOT :

1. Plug out the USB cable
2. Remove memory card(s) from the card slot, otherwise, there may be a chance of lost or corrupt data.

Note: For Windows XP users, to safely disconnect the VP8860 from computer, click on the system tray  remove icon and wait until you get a message saying that  you can safely unplug the device before disconnecting the USB cable.

To avoid any low battery, it is recommended to keep it plugged into the AC adapter / charger

2- 3. Downloading or Editing the files on PC:

- Power on the VP8860
- Connect the VP8860 and PC with the provided USB cable
- Double Click the " My computer" icon , the operating system will display 3 icons identifying the media types correspondingly.
- You can then read ,write,copy ,delete and remove data on the PC.

Note:

- The VP8860 uses the FAT file system, the maximum size of a single file is usually limited to 2G

3. Settings for your VP8860

In the Home screen, move the cursor to the Options icon to highlight it and press joystick to enter Options to start setting.



Auto shutdown Timer:

Press Joystick button to adjust the setting, this setting can be changed from 1 to 30 minutes. Push left to decrease time value, push right to increase time value.

Time Zone /Display :

These show current local time in cities and countries.

To set up your Screen Display, click [OPTIONS]and high-light the [DISPLAY]



Language :

This version can be set to English, Japanese, Korean, Spanish, German, French, Italian, Chinese, Russian.

Screen Brightness :

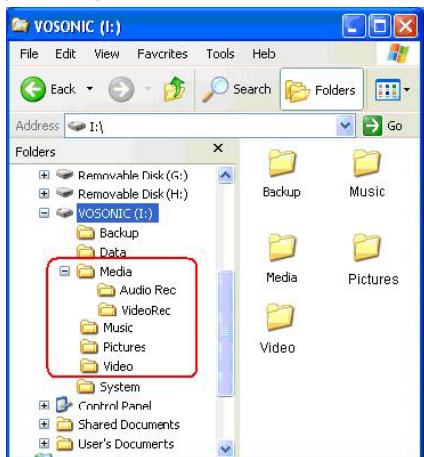
Use Joystick button, you can change the LCD backlight
Push left to decrease setting value, push right to increase setting value.

Screen Saver Timer :

There is an auto screen-off timer to save battery power, you can change this setting by using Joystick button.
This setting can be changed from 0 to 180 seconds.

3-2. Your Media files

To quick playing or searching the Video, Music and Pictures files, please import the files to the folders accordingly



Media File Conversion

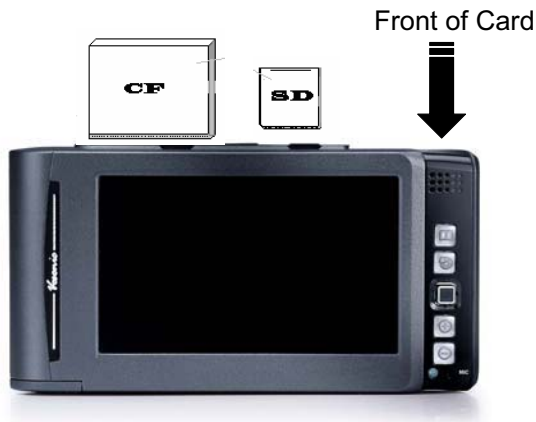
There are so many formats that it is very possible that the media files you have will not play right away on your device.

If you have some video files that do not play directly on your VP8860, they will have to be converted first.

To convert a video file in the right size and format to be read by the VP8860 Please read the VP8860 specifications first or mail to service@vosonic.com.tw for instruction.

4. Using a memory card to transfer photos to VP8860

Note: Please insert the memory card with the front of the card facing the LCD.



When a memory card is inserted, system will auto display a menu for asking "No Action", "Full Backup" or "Photo Backup".

1) Full Backup

You can backup the whole folder (including it's subfolder and files) from memory card(s) to internal storage (Hard Drive Disk).

- Scroll to the Full Backup mode and press Joystick button.

2) Photo Backup

The Photo Backup allows you to quickly search the digital images by saving the subfolder only. You can backup the subfolder from memory card(s) to internal storage (Hard Drive Disk).

- Scroll down to the Photo Backup mode and press Joystick button.

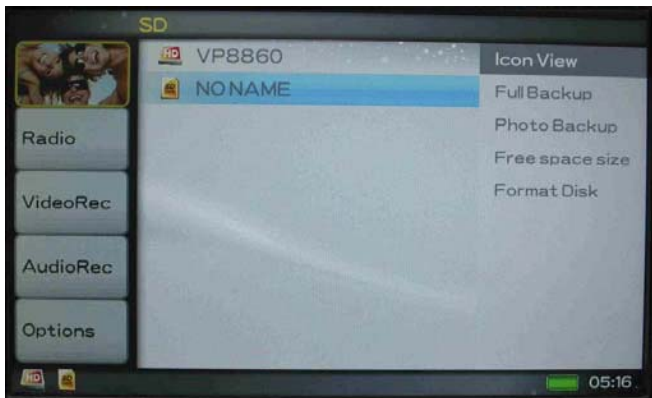


- When the same card was inserted and copied twice, two different folders were created, VP8860 won't overwrite the folder.
- All files transferred from each memory card are stored onto the Backup folder in numerically, under the name "CF0000", "CF0001", "CF0002", "CF0003"
- To stop the data transfer, just depress the Joystick or ESC buttons.
- If an erroneous display, please re-format the memory card(s) first, It may be due to the bad sectors.

3) NO Action

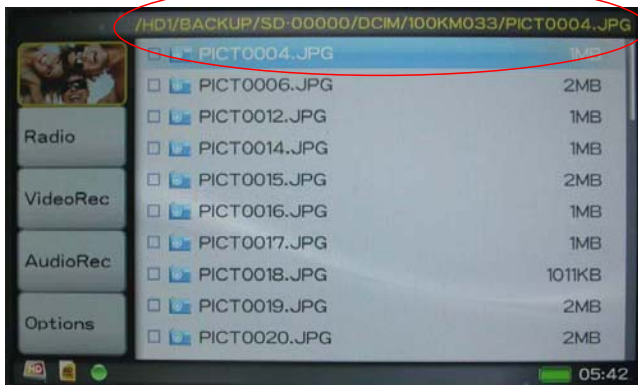
Escape from current mode.

If you want to back to the Photo /Full backup modes, just scroll to the path of memory card you want to backup, and press [MENU] button.



4) Navigating the Directory Structure

Just below the top status bar, you can see the path to the directory you are currently viewing.

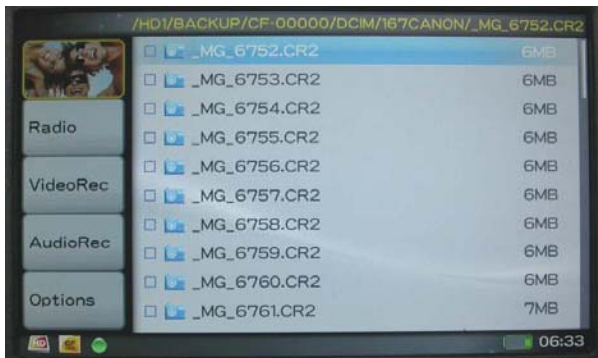


5. FOTO PLAY MODE

1. From the Home page, highlight the Browser icon
2. Scroll to the HD icon and depress the joystick button
3. Find the pictures you want to view.
4. Press MENU button to find the view modes
There are 2 types of views for you to browse through your folders or files : The Icon View and List View
5. Depress the joystick to change the view mode.

icon View / List View

List View : The screen will display all the JPEG in pictures in list of 10 .



Icon View : The screen will display thumbnail of all the JPEG pictures in group of 20



Multi Select

The multi select function allows you to choose a range of photos

- Press MENU button and select [MultiSelect] mode
(The cursor will become blue)
- Use the direction buttons to click the files you want to move.
(The cursor will become orange)
- Then press MENU button to select mode you want to move the files.
(see *Copy,Delete*)

Copy

- Use the Joystick button to high-light the file you want to copy.
- Press [MENU] to select [COPY]mode, then press Joystick button
- The message “ copied to to clipboard “ will pop on the screen ,
then press Joystick button.
- Use the Joystick button to find the folder or Path you want to paste.
- Press [MENU] to select [Paste] mode, then press Joystick button
- It will ask “ Paste from clipboard ?” Use the Joystick button to reply
Yes or No.
- Click “ Yes” , the copy fuction will be performed



Delete

- Use the Joystick button to find the file you want to delete.
- Press [MENU] to select [Delete]mode, then press Joystick button
- It will ask "Delete File ? " , Use the Joystick button to reply Yes or No..

Show EXIF and histogram :

- Enlarge the specific JPG file you want to view and press the [Menu]button.
- Select [Display Settings] and depress the OK button.
Find the [Show EXIF] and press OK to show file information such as shutter speed, flash condition, focal length, and other image information.



Slide Show : Enlarge the specific JPG file you want to view and press [Menu] button to select Slide Show mode.

Slide Interval Setting:

- Hold and push the Joystick button to the left to decrease the interval time
- Hold and push the Joystick button to the right to increase the interval time

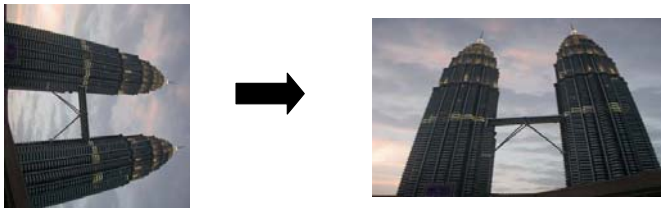
ZOOM IN / OUT DISPLAY

- You can use [+] or [-] buttons to zoom in /out the picture .
- Use the Joystick button to pan right or left, up and down .



ROTATE DISPLAY

- You can press Joystick button to to rotate the picture in un-clockwise direction.



Printer Setup

For Photos to be directly printed out through printers, printers must be Pictbridge compatible. If printer is not Pictbridge compatible or if it is not connected well, VP8860 will show "No Supported Printer".

Print

This PictBridge technology allows you to connect your VP8860 directly to your printer without a computer, just plug your VP8860 into the printer using a USB cable and you are ready to print

- Connect the USB cable to the main unit
- Turn on the VP8860
- Find the specific JPEG pictures you want to print and press [MENU] button
- Select [Print] and press Joystick button

Note : The printing function only for the JPEG files.

6. Video Play Mode

To make sure if your video file is in the right size and format to be read by the VP8860. Please read the VP8860 specifications first.

- Push up the Joystick button to fast forward the videos
- Hold and push JoyStick button to the left to rewind and find the specific part of movie you want to play.
- Hold and push Joystick button to the right to fast forward and find the specific part of movie you want to play.
- To pause or start/resume playback, press Joystick button.

Playlist :

Playlist is a list of songs that the VP8860 will automatically play one after the other. To create Playlist, you can simply copy, delete, paste the files to the folder you want.

Video Scale :

Allows to change the way the image is displayed.

Press [MENU] button and find the Video Scale, then use the Joystick button to select the way the image will be displayed

7. Music Play Mode

1. From the Home page, highlight the Browser icon
2. Scroll to the HD icon and depress the joystick button
3. Find the music files you want to play.
4. Press MENU button to select the setting.

Playlist

Playlist is a list of songs that the VP8860 will automatically play one after the other. To create Playlists, you can simply copy, delete , paste the files to the folder you want.

Press MENU to select the setting.



Repeat Segment On (Cyclically replaying user-defined sections of a song)

1. When listening to music, press the joystick button to set the starting point
2. Press the joystick button again to set the ending point. The VP8860 will play the section cyclically.

Sequence :

Shuffle :

- To shuffle the music in a random order, you can scroll to [Shuffle] , then Press Joystick button.
The shuffle only works within one folder .

Repeat All :

- Press MENU button
- Click [Sequence] , then find [Repeat All]
- Click it to set it ON , again to set it OFF.

Repeat Single

- Press MENU button
- Click [Sequence] , then find [Repeat Single]
- Click it to set it ON , again to set it OFF.

Play all

- Press MENU button
- Click [Sequence] , then find [Play all]
- Click it to set it ON , again to set it OFF.

Equalizer

- There are 9 EQ modes (Normal, Bass, Classic, Dance, Live, Rock , Treble ,User) for your selection.

KeyLock

- To lock all the VP8860 buttons from being accidentally pressed, scroll to “ KeyLock “mode and press Joystick button.
- Press “ MENU “and “ESC “ buttons to effect the buttons again.

Play in Background

- This allows you to switch to other modes, like to see the photos simultaneously when the music is playing.

Other functions

- Hold and push the Joystick button to the left to rewind and find the specific part of music you want to play.

- Hold and push the Joystick button to the right to fast forward and find the specific part of music you want to play.

8. Video Recording

With your cradle properly connected to a DVD, or satellite receiver, making a recording is a simple affair.

1. Power on VP8860.
2. Connect the AC adapter to the VP8860.
3. Connect the provided A/V cable to the A/V input of VP8860



A/V cable with 3RCA plug

4. From the Home page, highlight the VideoRec icon



5. Connect the other end to the A/V output socket of the TV set.
(Please make sure your TV has A/V output)
6. Depress joystick button to record, while recording, you will see the length of time of the recording in the top right of the screen.
7. Press Joystick again to pause recording.
8. Press ESC to stop recording.

8. Scheduled Recording

If you would like to make a recording for a future date or time , you can use the scheduler . You can program up to 8 different recordings . From the VideoRec screen, highlight the Schedule icon and press joystick button to enter the Scheduler screen.

1. Highlight the line you want to edit, then press joystick button.
2. Set the line of Storage to the desired type of memory card.
3. Set the line of Quality to the desired Quality of recording video.
4. Set the line of Start time / End Time to desired date, time and minutes, seconds.
5. Press ESC button to save this scheduled recording.

Note:

- Make sure that the Remain Time is longer than Planned Time.
- Make sure the end time is earlier than the start time.
- If you are listening to music, watching a video or looking at photos with device, it will not interrupt you to make the scheduled recording.
- Make sure the adapter is connected to the device at the time of the scheduled recording.
- Make sure the cursor is on the VideoRec icon.
This way the VP8860 will be in standby mode when the recording starts.. If your VP8860 is shut off and A/V cables , adapter not connected, the recording will not take place.

Setup Parameters :



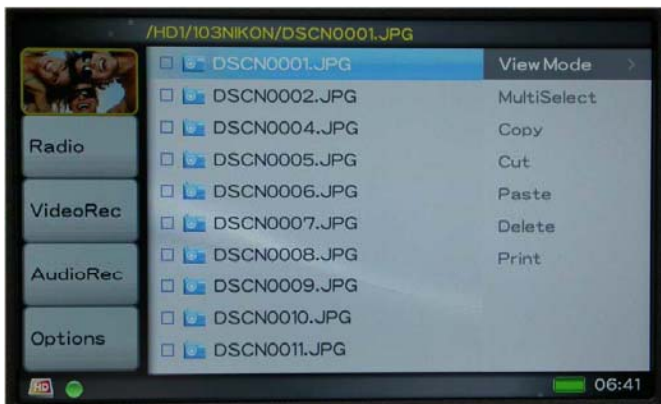
Note:

- Due to the Windows® FAT32 AVI file type specification, the maximum recording file is 2 GB.
- All recording videos will be saved as VREC0001.MP4 ,VREC0002.MP4 ,VREC0003.MP4.

9. Copying , Pasting and Deleting Files and Folders

Under the screen Browser mode, you can copy, paste or delete files from one location in the file structure to another.

Simply Press [MENU] to select the modes .As you finish the selection , just press Joystick button.



10. Listen to FM Radio

Remember to connect the earphone to earphone jack .
The earphone acts as the FM antenna.

Presetting a Channel

Automatically scan from channel to channel :

- Scroll to [Radio]
- Press [MENU] button
- Select [Scan and Save] mode.

The tuner will stop at the first receivable broadcast station.

- The current FM station will be set to a preset channel number.
You can store up to 19 stations in memory.
- There are two groups (**GROUP1** and **GROUP 2**) where each group can save up to 9 channels.

- To stop auto tuning, press the [ESC] button .
- Note that this function may sometimes fail do to bad reception of some channels.

11 . Audio Recording:

- You can use the “Record” function anytime . However, you are not able to record voice streams and listen to music at the same time.
- Adjusting the volume to the right values is very important for usable recordings, it is better to choose a middle-way so the signal is not too loud and gets clipped but not too silent to get lost in the noise of the hardware.
- All recording files are saved into AudioRec Folder
- All recording files are saved as AAC format.



Recording Quality

H: (High)

M: (Middle)

L : (Low)

Channel- **Stereo** is for line-in recording

Channel- **Mono** is for voice recording

Recording from built-in microphone

1. Scroll to [AudioRec] and press [Joystick]button
2. Press [MENU] button and use Joystick button to select the [MIC- In].
4. Press [Joystick] button again to execute the recording
5. Press [joystick] button again to stop the recording.

Recording from Line-in

You can use a line –in cord to record music directly from an audio device (such as CD player)

1. Connect line –in cable to audio output from the source
2. Connect other end to AV input port on VP8860 .
3. Remember to keep the AC adaptor be plugged in.
4. Scroll to [AudioRec] and press [Joystick]button
5. Press [MENU] button and use Joystick button to select the [Line –in]
6. Press [Joystick] button again to execute the recording
7. Press [Joystick] button again to stop the recording..

Note:

Some music CDs have a special copy protection system that will not allow VP8860 to make audio files from that sources.

Recording FM radio show

1. Use the Joystick button to finding a desired channel.
2. Scroll to [Radio] and press [MENU]button
2. Scroll to [Record] mode.
3. Press the Joystick button , the recording function will be performed.

12.Battery Recharge:

- 1) To charge the batteries, please connect the plug of the AC adapter to DC 5V jack of the main unit. When the Power LED indicator goes off , it indicates that the batteries are fully charged.
- 2) Please use only the **Vosonic original 2500mAh 3.7V rechargeable Li-ion battery**
 - For additional battery packs, please contact your dealer or you can purchase it from Vosonic.

13. If an erroneous display /operation occurs :

- 1) When the copy error message pop on screen , there may be a chance of corrupt data or the memory card is damaged , please re-format your memory cards
- 2) If any shut down caused by erroneous operation , you can depress the [reset] button located on the right side to switch off the main unit .
- 3)If the unit operated via USB on to PC while the batteries are low, Erroneous display /operation may occur, if this happens ,unplug the USB cable, and press the [reset] button .

14.Care for the Hard Drive and unit :

- 1) To keep your hard drive in better operating performance , we recommend to periodically run Scan Disk and Disk Defragmenter .
- 2) Hard Drive must be formatted to the FAT or FAT-32 format, NTFS format is not compatible with this function .
- 3) If the computer or VP8860 can not detect the Hard Drive, check the suggested solutions:

- Check the Hard Drive is plugged securely or not
- It is not recommended to format the 32G above Hard Drive under Windows 2000 or Windows XP

Note: Win 2K/ Win XP can not support to format the 30G above Hard Drive at FAT format.

- 4) Please carefully insert and remove the memory card from each slot .
Do not drop, jar , bump , shock the unit , or expose to severe vibration while data is being transmitted .
- 5) To reduce the risk of electronic shock , do not remove cover (or back)
- 6) To reduce the risk of fire or shock hazard, do not expose this equipment to rain ,any liquid or moisture.



7)

To avoid any dangerous to the environment and to human health.
Please do not dispose of the electronic device in a regular trash.
Please have this device be collected at places of distribution

Hard Disk Assembly Chart

1. Using the supplied screwdriver to remove the 2 screws



3. Use your finger nail (so you don't scratch the case) to open the side clip



4. Carefully slide the Hard Disk into the chassis.



1. Seat the cover in place by pressing the side clip onto the rail.



15.Format Hard Disk without PC

- (1). Scroll to the Hard Disk icon and press [MENU] button
- (2). Scroll down to [Format Disk] option and press Joystick button , then the format function will be performed.

Attention:

- (1) If the hard disk already contain data, please backup the data first , because when you partition and format a hard disk, all the data on that partition is permanently deleted.
- (2) The Hard Drive will be formatted as FAT format

16.Troubleshooting.

WARNING

Under no circumstances should you try to repair the system yourself, as this will invalidate the warranty. Do not open the system as there is a risk of electronic shock.If a fault occurs, first check the points listed below before taking the system for repair.If you are unable to remedy a problem by following these hints ,consult Your dealer or service center.

Problem	USB Connection issues
Solutions	If using a USB port in the front of your computer, try a USB port in the back. Front USB ports are often from non-powered.
	If using a laptop computer and a docking station, try connecting without the docking station.
	If you cannot see the files on the device after copied files to VP8860 via USB from computer , You must properly remove (un-mount) your VP8860 from the computer before disconnecting the USB cable to avoid loss of data or freezing the computer and VP8860
	If you can not find the VP8860 Hard Drive show up in Windows for over one minute, the Files Allocation Table (FAT) of Hard Drive may gets corrupted, you can use Format Function on the VP8860 but note it will erase ALL of the data on your VP8860.
	Macintosh™ OS issues

Problem	
Solutions	MacOS 10.0.x does not adequately support FAT volumes. Upgrading to 10.1 or later is mandatory
	The FAT-32 format made by MacOS X's Disk Utility is incorrect. Formatting must be done under MacOS 9.
	The FAT volumes do not appear or disappear until after the mouse is being moved.
Problem	Corrupt data , General Error , Can't open Source File
Solutions	Due to file allocation table (FAT) has been corrupted, the data in memory card transferred into VP8860 may be looks faulty, please backup the data and run ScanDisk , Disk Defragmenter or reformat the memory card.
	The browser will show a ? icon indicating that it is not one of the standard file types that it can play.
Problems	Partition not found
Solutions	To work in the stand-alone mode, both the disk and the memory cards must be formatted to the FAT or FAT-32 file systems.
Problems	Freezes operation or Stops
	Press the [reset] button to off the device and the VP8860 will shut off ,then you can restart it. If you get a un-normal freezes from a video /audio playback , call our technical support hot-line or write it to service@vosonic.com.tw

Frequently Asked Questions

Problem	Solution
Why can't I hear music?	-If the player says it is playing a video or music and you don't hear anything, then there may be h a problem with your speakers, headphones or your. If you can hear other sounds through your speaker then there might be a problem with our feed. If you feel the latter to be the case, then please contact us and provide us with as much information as you can .
The system does not react when buttons are press.	Remove and reconnect the AC adapter plug and switch on the system again
Held down the power button and it will not turn back on.	Make sure if the "Hold" key (next to the Power button) is locked or not.
How can I get an extra battery for my VP8860	You can get it from your original dealer or check Vosonic on –line shopping : http://www.vosonic.twmail.net
How do I browse my files on the VP8860 while I am playing a music file?	You can browse your files while listening to a music file only. While your music is playing, press the "MENU" button to enter the "Play in Background " mode. Note: This feature only available during Music playback

How to update the firmware for my Vosonic

• VISIT VOSONIC ON THE WEB

Go to <http://www.vosonic.com> to download the latest firmware

The latest version of this manual may be available on Vosonic's Web site

• CONTACT VOSONIC

To process a request for Technical Service, please mail the following information to service@vosonic.com.tw

1. Model Number :
2. Serial Number :
3. Firmware version :
4. HDD capacity and brand :
5. Memory card capacity and brand :
6. A description of the problem :
7. Your dealer name or the web site for the item was purchased :

•REGISTER A MEMBER AT Vosonic CLUB

The most easy way to communicate the operating problem with other users.

Register a Vosonic members at Vosonic Club

<http://www.vosonic.twmail.net>

THANK YOU FOR CHOOSING THIS PRODUCT

We hope it will provide you with years of trouble-free enjoyment. Please look after your Vosonic. If you experience problems and cannot find solutions in the previous sections, please contact your dealer or check for updated firmware at

www.vosonic.com

or email to

service@vosonic.com.tw

The Vosonic Team